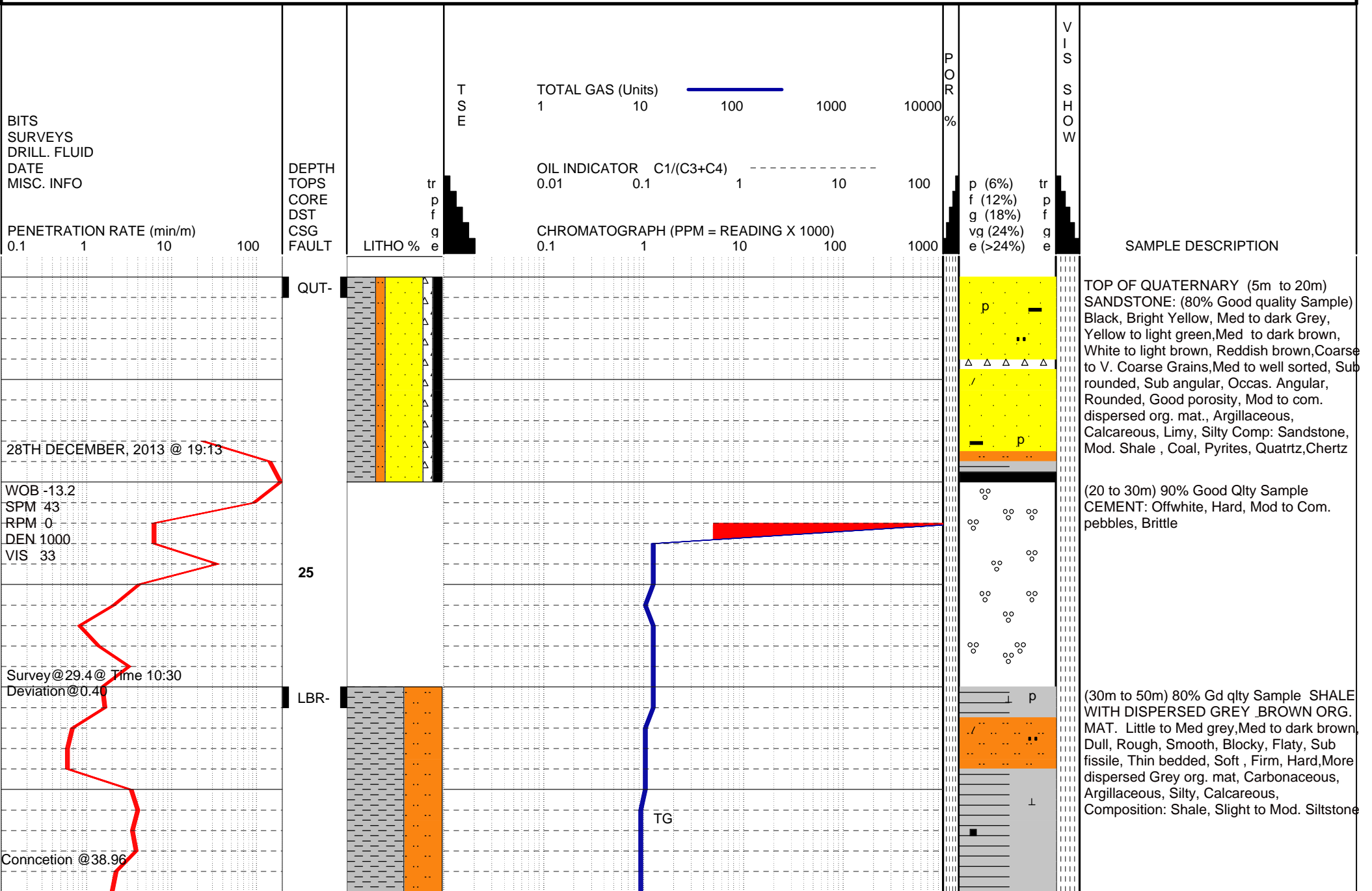
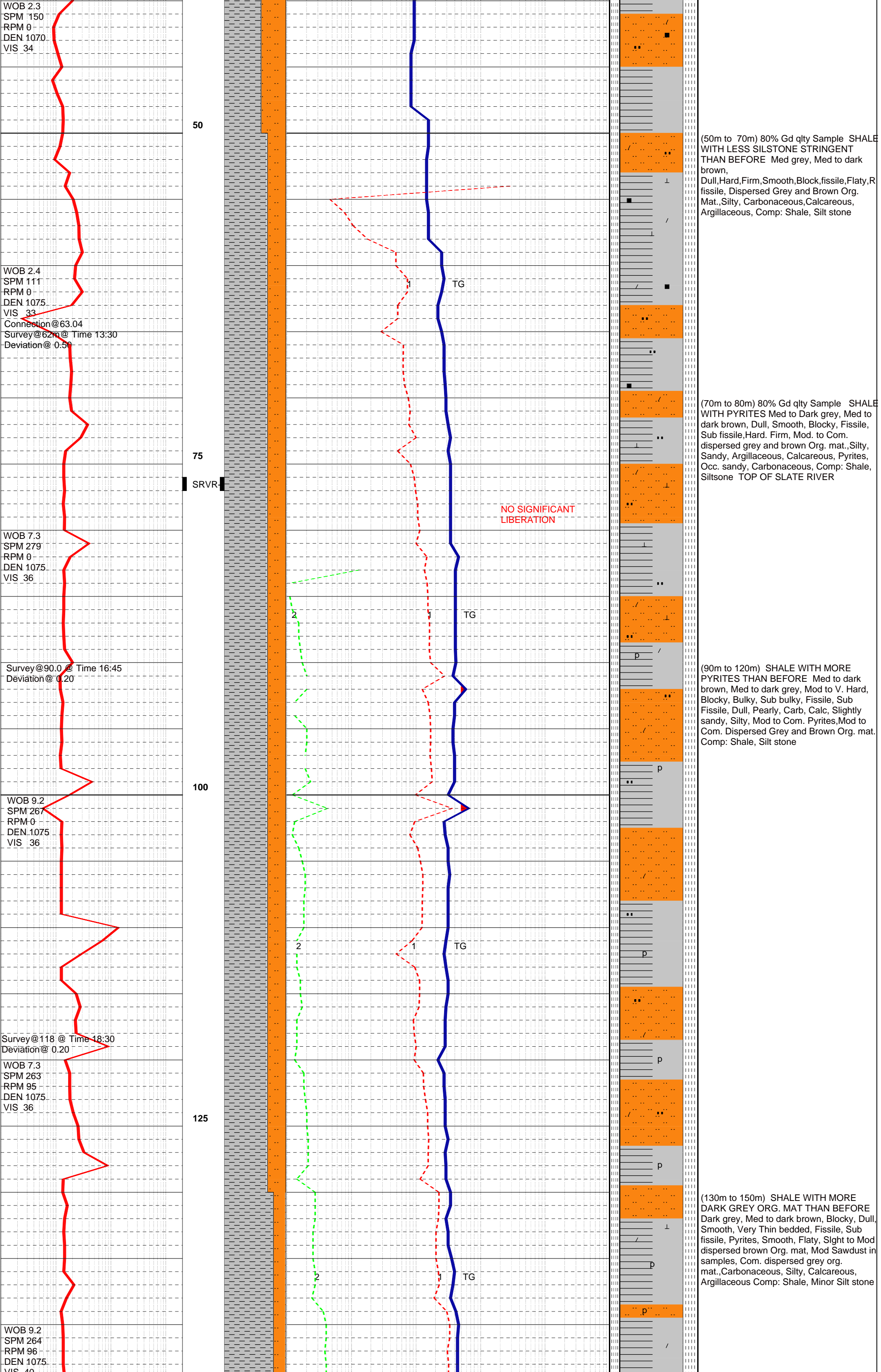


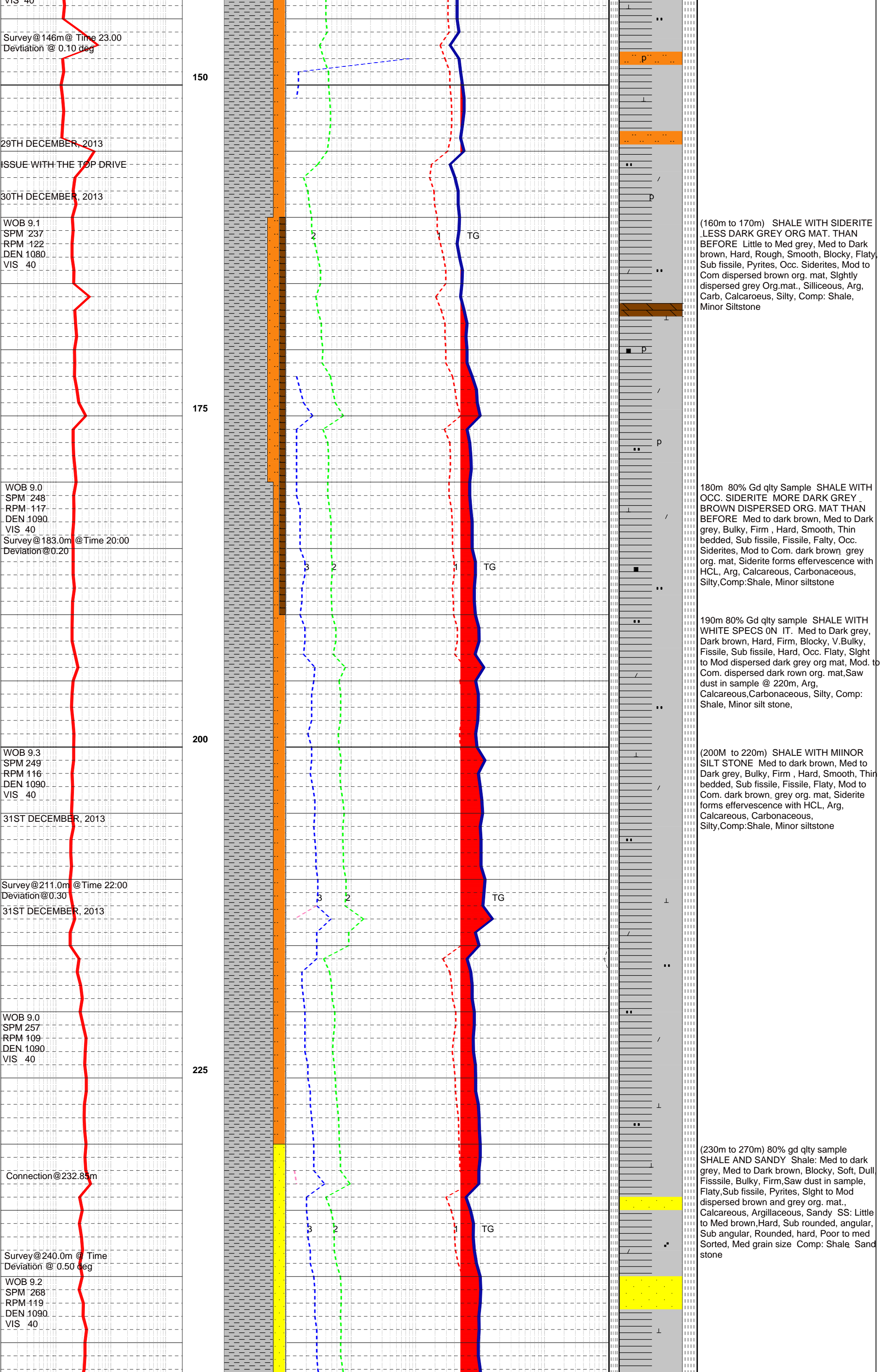


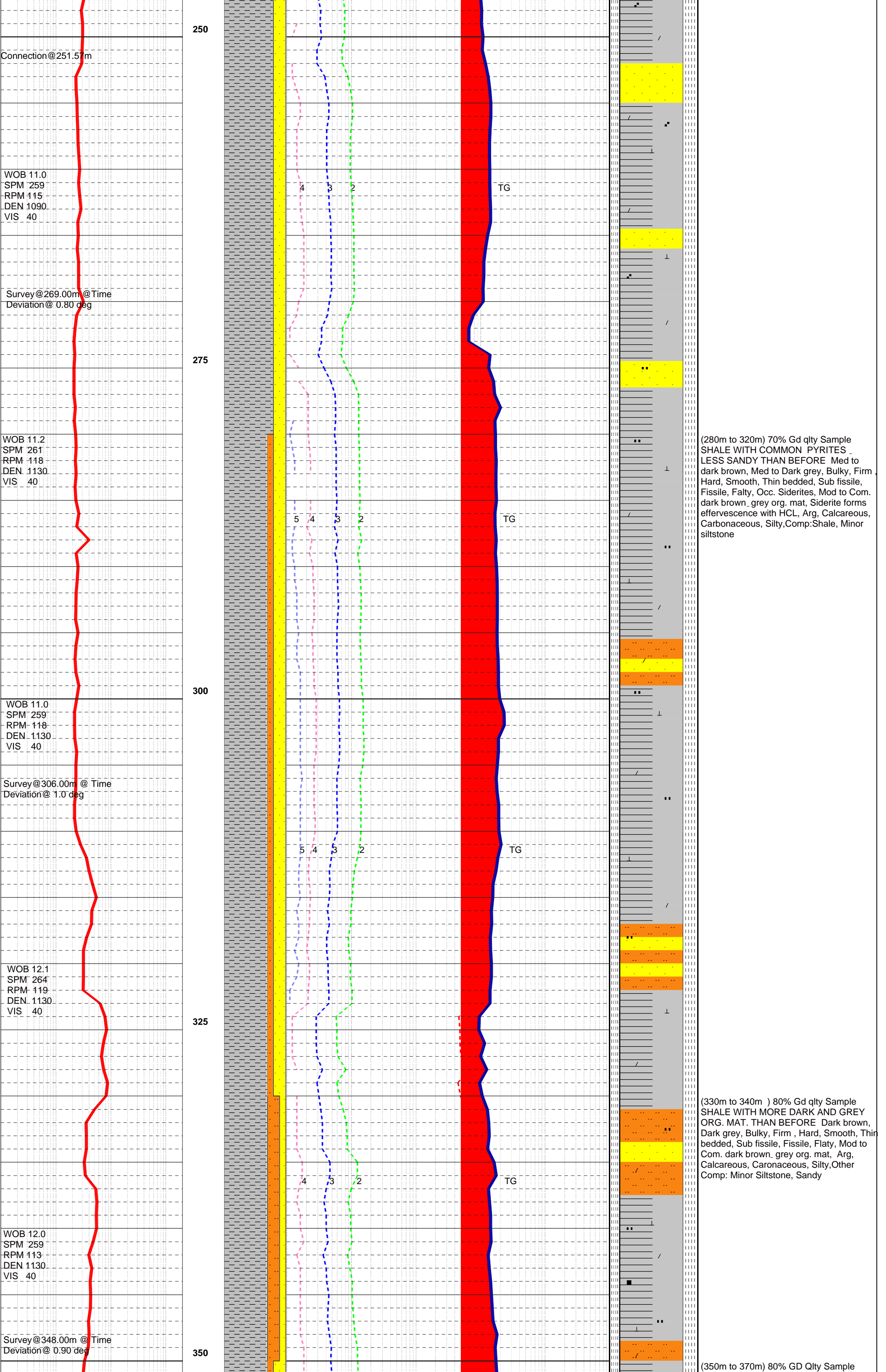
PERSONNEL: UKEME DAN, RAHIL KIANI

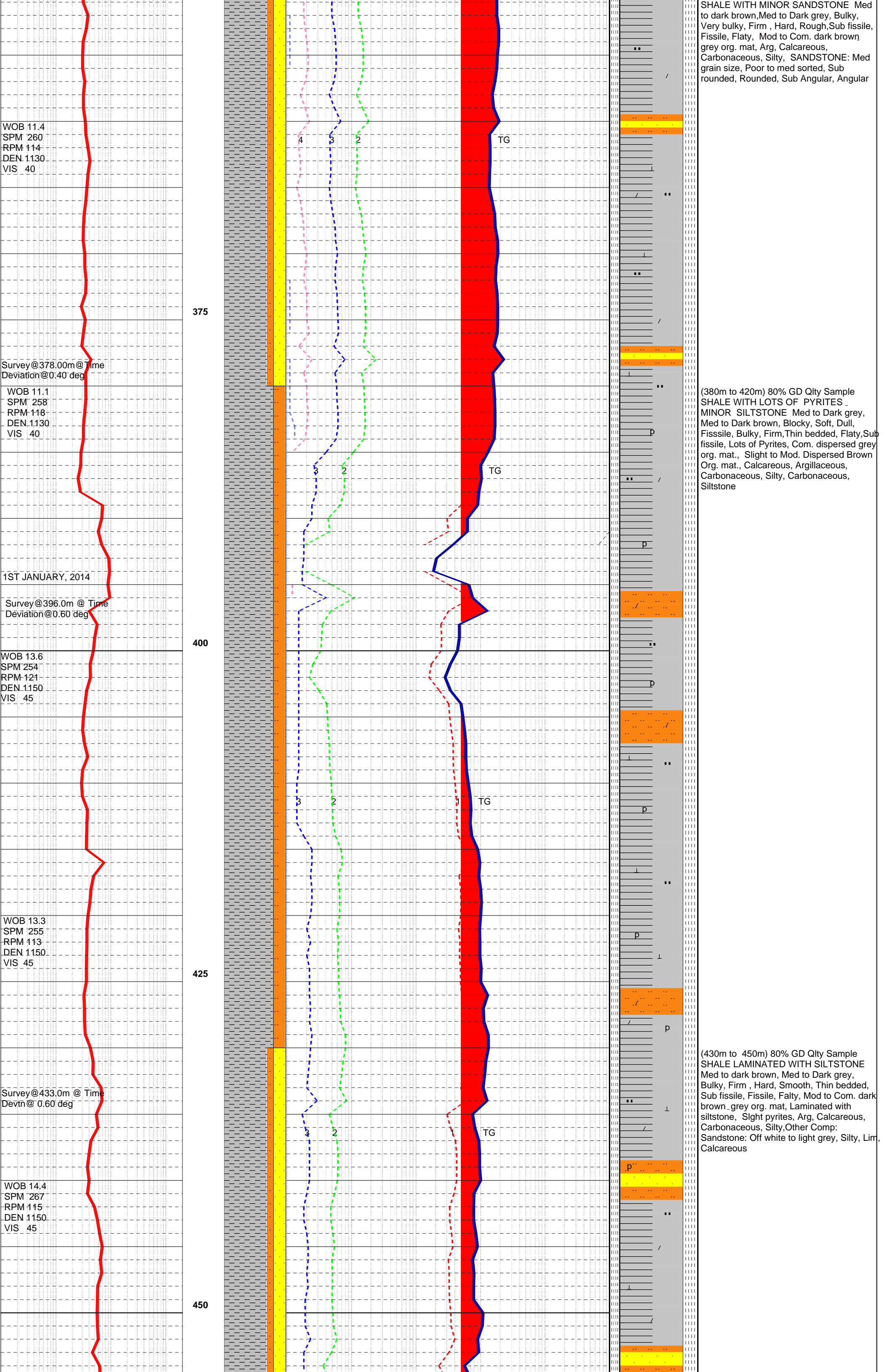
ALL LITHOLOGIC SYMBOLS ARE CANSTRAT COMPATIBLE











WOB	14.3
SPM	252
RPM	69
DEN	1150
VIS	45

WOB	15.5
SPM	248
RPM	118
DEN	1150
VIS	42

WOB	14.8
SPM	238
RPM	118
DEN	1170
VIS	42

WOB	15.4
SPM	239
RPM	123
DEN	1170
VIS	42

WOB	17.5
SPM	242
RPM	122
DEN	1170
VIS	42

550

475

500

525

550

 $\overline{\text{TG}}$

— T̄G —

TG

TG

(460m to 490m) 80% GD Qlty Sample
SHALE WITH MORE PYRITES THAN
BEFORE Shale : Med to Dark grey, Little to
Med brown, Thin bedded, Sub fissile,
Fissile, Flaty,Bulky, Firm , Hard, Smooth,
Slight to Mod. brown org. mat., Mod to Com.
dark grey org. mat, Laminated with siltstone,
Com. pyrites, Laminated with Siltstone, Arg
Calcareous, Carbonaceous, Occ.
Sandstone: Offwhite to light grey, Poor to
med sorted, Silty, Lim, Calc,

(500m to 530m) 70% GD Qlty Sample
SHALE WITH MINOR SILTY SANDY
STRINGENT Med to Dark grey, Med to
dark brown, Bulky, Firm, Hard, Smooth,
Thin bedded, Sub fissile, Fissile, Flaty, Occ
Pyrites, Mod to Com. dark brown. grey org.
mat, Arg, Calcareous, Carbonaceous,
Silty, Other Comp: Minor siltstone stringents
Minor Silty Sandy stringents

(540M TO 570M) 80% GD qlty Sample
SHALE, RARELY SILTY AND PYRITIZED
Shale: Med to Dark grey, Lght brown,
bulky, Dull, Rough, Fissile, Sub fissile,
Blocky, Thin bedded, Hard, Firm, Arg, Cal,
Occ. Pyrites, Rarely Pyritized, Com.
dispersed dark grey org. mat., Slight
dispersed Brown Org. mat.

